

# Forney® 45 P PRO PLASMA CUTTER



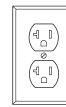
<b>ITEM# 445 SPECS</b>	<b>APPLICATIONS:</b> Light Industrial, Automotive, Farm / Home, Maintenance & Repair, General Fabrication, Construction, Fire & Rescue, Contractors, Training Schools, HVAC	<b>PROCESS:</b> Plasma Arc Cutting  <b>RECOMMENDED INPUT PRESSURE/ FLOW:</b> 6.6 CFM (188 l/min) @ 100-130 PSI (6.9-9.0 bar)	<b>INPUT VOLTAGE:</b> 110-120V / 208-240V  <b>OUTPUT AMPERAGE RANGE:</b> 120V - 15A-20A 240V - 15A-45A	<b>CUTTING CAPACITY (STEEL - 240V):</b> Clean: 7/8" (22mm) Sever: 1-1/8" (28mm)  <b>WEIGHT:</b> 31 lbs. (14 kg)
----------------------------	---	--	---	--



ITEM# 445

## INCLUDES:

- ITEM# 445 Forney® 45 P PRO Plasma Cutter
- Forney® Ignite™ Plasma Torch 25'
- Ground Clamp w/Cable and Connector
- 120V to 240V Adapter
- Consumable Starter Kit
- Forney Expert-Tech™ Tool



120-Volt

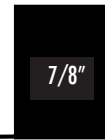


240-Volt

**Dual-Voltage:** Operates on 120V and 240V input power. Automatically detects 120V or 240V. Comes with an adapter cable to use whatever power is available wherever you are. No changes to the machine needed.



1/2"



7/8"

**Clean Cutting Capacity:**  
 1/2" Aluminum  
 7/8" Mild and Stainless Steel

**Long Life Consumables:** The consumables for our Forney® Ignite™ hand torch let you spend more time cutting and less time replacing consumables. High quality, industry proven consumables for cutting, precision, and gouging readily available to support your application requirements.

**Forney® Ignite™ Torch:** Drag torch technology supports hand cutting and all skill levels. Count on reliable arc starts and longer cutting time.

**Expanded Metal Mode:** Turn on expanded metal mode to automatically add a pilot arc when needed to keep cutting. Turn off this mode to have a constant full power cutting arc.

**Large Operating Envelope:** 40' operating envelopes to maximize cutting productivity. Expand with our 50' Forney® Ignite™ Torch for more time spent cutting.

**Better Cutting, Less Grinding:** Spend less time grinding with excellent cut quality.

**Intuitive Controls:** Easy to understand controls allow faster parameter set-up regardless of skill level.

**Large Control Knobs:** No more taking off your gloves to make adjust. Feedback controls allow you to feel the adjustments as you make them.

**Go Anywhere, Cut Anywhere:** 120V/240V service plus, this lightweight machine offers extreme portability and runs at full power on a generator with 8 kW of continuous power.

**Developed, Tested and Trusted:** Developed, assembled and tested in Fort Collins, Colorado

**Rugged & Tough:** Built with an all-metal cabinet to take the day-to-day. No plastic to worry about breaking.

**Integrated Air Pressure and Water Separator:** Provides additional protection for your machine while maximizing the life of your consumables. Additional downstream moisture traps are recommended for further protection.

**Expert-Tech™ Services:** Our technicians are here to keep you and your machine working, ultimately saving you time and money. Forney hires welding technicians to help with any questions you may have, machine based or not.

**Troubleshooting:** Unique fault codes minimize the downtime of the machine and keep you working.



**Temperature Controlled Fan:** Helps reduce dust particles from entering the machine, cuts down on noise and saves money on energy.



**Quick Torch Connection:** Allows for quick torch attachment and removal, ensuring a proper torch alignment every time the torch is connected.



**Warranty:** Power source is warrantied for 3 years. Forney® Ignite™ torch is warrantied for 1 year.



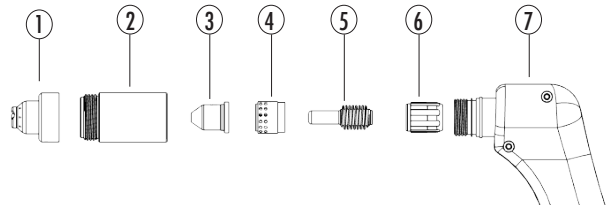
**Generator Requirements:**  
 120V - 4,000W continuous output  
 240V - 8,000W continuous output  
 No low-idle, less than 5% THD

CC/DC/1ph

Amperage Range	Rated Output	Max Input Amperage	Air Requirement	Cuts	Cut Capacity	Cut Speed	Dimensions	Weight
120V 120V: 15A - 20A	120V: 60% @ 20A	120V @ 18A	6.6 CFM @ 100-130 PSI Max	Mild Steel Stainless Steel Aluminum Copper	Clean - 1/4" Sever - 3/8"	240V: 10"/min (7/8") 5"/min (1-1/8")	H: 12.375" (31,4cm) L: 18" (45,7cm) W: 7.375" (18,7cm)	31 lbs. (14 kg)
240V 240V: 15A - 40A		240V @ 22A			5.8 CFM @ 100 PSI Minimum			

### CONSUMABLES:

45 P PRO Replacement Torches: For 45 P PRO air plasma machine only			
Torch Type	Amperage	20' Length	50' Length
7 - Forney® Ignite™ Hand Torch	45	ITEM# 85640	ITEM# 85950



Forney® Ignite™ Hand Torch Replacement Consumables: Proper consumable pairing critical to ensure 45 P PRO performance. Do NOT mix consumable types								
Consumable Type	Torch Type	Amperage	Shield / Deflector	Retaining Cap	Cutting Nozzle	Swirl Ring	Electrode	Electrode Holder
Drag-Cutting	Hand	45A	1 - ITEM# 85939	2 - ITEM# 85936	3 - ITEM# 85931 (5-pk)	4 - ITEM# 85943	5 - ITEM# 85927 (5-pk)	6 - 1-ea included with ITEM# 85927
Precision Cut (P)	Hand	45A	1P - ITEM# 85925	2 - ITEM# 85936	3P - ITEM# 85930 (5-pk)	4P - ITEM# 85942	5 - ITEM# 85927 (5-pk)	6 - 1-ea included with ITEM# 85927
Gouging (G)	Hand	26-45A	1G - ITEM# 85937	2 - ITEM# 85936	3G - ITEM# 85932 (5-pk)	4G - ITEM# 85943	5 - ITEM# 85927 (5-pk)	6 - 1-ea included with ITEM# 85927

45A Starter Kit: Included with each 45 P PRO machine order								
Consumable Type	Torch Type	Amperage	Shield / Deflector	Retaining Cap	Cutting Nozzle	Swirl Ring	Electrode	Electrode Holder
45A Starter Kit - ITEM# 85944	Forney® Ignite™ Hand Torch	45A	1 - ITEM# 85939	2 - ITEM# 85936	3 - ITEM# 85931 (2-ea)	4 - ITEM# 85943	5 - ITEM# 85927 (2-ea)	6 - 1-ea included with ITEM# 85927

### RECOMMENDED ACCESSORIES:

Image	ITEM# / Description	Image	ITEM# / Description	Image	ITEM# / Description
<b>Face Shields - Shade 5</b>		<b>Gloves</b>		<b>Gloves</b>	
	ITEM# 58610 Command PRO Grinding / Cutting Shield Assembly with Ratchet Headgear		ITEM# 53416 Forney PRO Multi-Purpose Goatskin Welding Gloves (XL)		ITEM# 53415 Forney PRO Multi-Purpose Goatskin Welding Gloves (L)
<b>Circle Cutting Attachment</b>		<b>Pipe Guides</b>		<b>Carts</b>	
	ITEM# 85683 Plasma Circle Cut Guide		ITEM# 70620 Pipe Guide, 2-3/8", Total Cut 4-in-1 ITEM# 70622 Pipe Guide, 2-7/8", Total Cut 4-in-1		ITEM# 332 Portable Welding Cart
<b>In-Line Air Filters</b>		<b>Air Hose</b>		<b>Replacement Ground Clamp Replacement 120V/240V Whip</b>	
	ITEM# 75545 Air Line Mini-Filter		ITEM# 75437 1/4" Male (MNPT) Fittings on Both Ends (3/8" ID x 25') ITEM# 75438 1/4" Male (MNPT) Fittings on Both Ends (3/8" ID x 50')		ITEM# 85667 Ground Clamp Assembly 150A ITEM# 78036 Adapter Cord